



May 2007

first floor plan

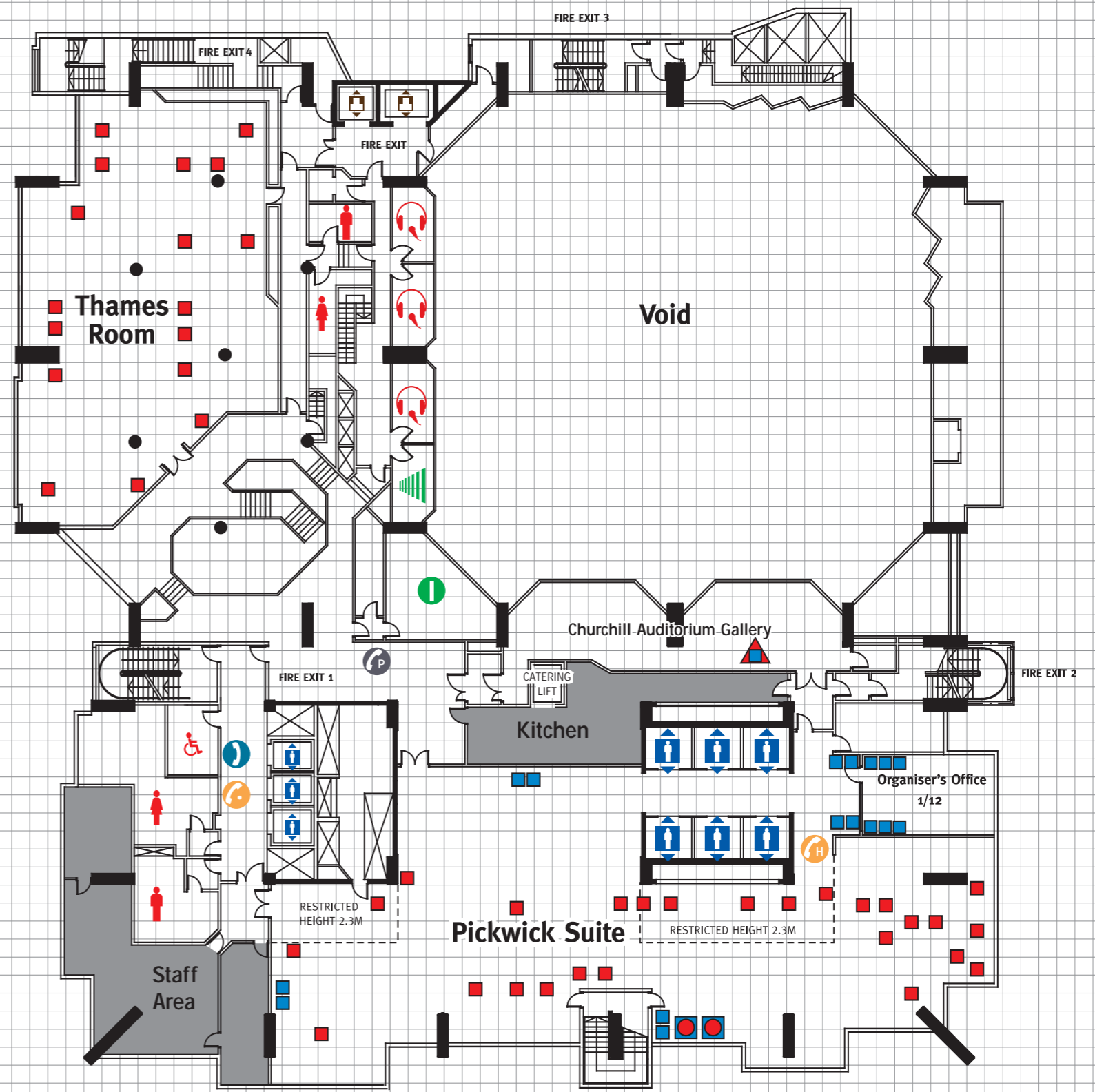


INVESTOR IN PEOPLE

first floor

	Pickwick Suite	Thames Room
Capacities		
Theatre	-	-
Classroom	-	-
Boardroom	-	-
Banquet	260	150
Fork buffet	450	250
<i>65 seats in the Churchill Auditorium Gallery</i>		
<i>Please note that these figures are subject to change according to safety requirements, legislation and AV usage.</i>		
Dimensions		
Height (max)	3.49 m	2.40 m
Height (min)	2.46 m	2.00 m
Length	39.5 m	20.0 m
Width	8.0 m	12.7 m
Area	435 m ²	258 m ²
Exhibitions		
	Yes <small>(limited lift access)</small>	No
Floor loading		
	3.5 kn/m ²	3.5 kn/m ²
<i>Larger loading may be possible. Please check with Event Manager.</i>		
Lighting		
Flourescent	Yes	Yes
Wall lights	No	No
Down lights	Yes	No
Controls in room	Yes	Yes
Dimmers	No	No
Blackout	No	No
Windows	Yes	Yes
General lighting		
<i>Flourescent ceiling mounted lighting fittings.</i>		
Natural lighting		
	Average	Average
Power		
13 amp sockets	Yes, multiple locations in all areas	
3 phase supply	Available on request	
Current capacity	Maximum per phase	
Projection		
Slide	Not recommended	
Movie	Not recommended	
OHP	Not recommended	
Video/data	Not recommended	
Projection room	No	No
Simultaneous interpretation		
	No	No
Sound		
	Yes	Yes
Communications		
Telephone/fax	Available on request	
ISDN lines	Available on request	
Wifi	Available on request	
CAT5	Available on request	

Security and Fire Safety
Please check access arrangements and special requirements with your Event Manager.



Key

13 amp wall socket	Power 3 phase 63A	Sound control	Lift: Goods	Pay phones	Toilets
Electrical floor sockets	Power 3 phase 32A	Fan housing	Interface control room	Help phone	Lighting bars
Power 3 phase 125A	SI booth	Lift: Passenger	Induction loop	House phones	Pillar

Scale in metres: 0 2 4 6 8 10

This plan is intended for guidance only and does not form any contract, representation or warranty, expressed or implied.