



August 2007

sixth floor plan

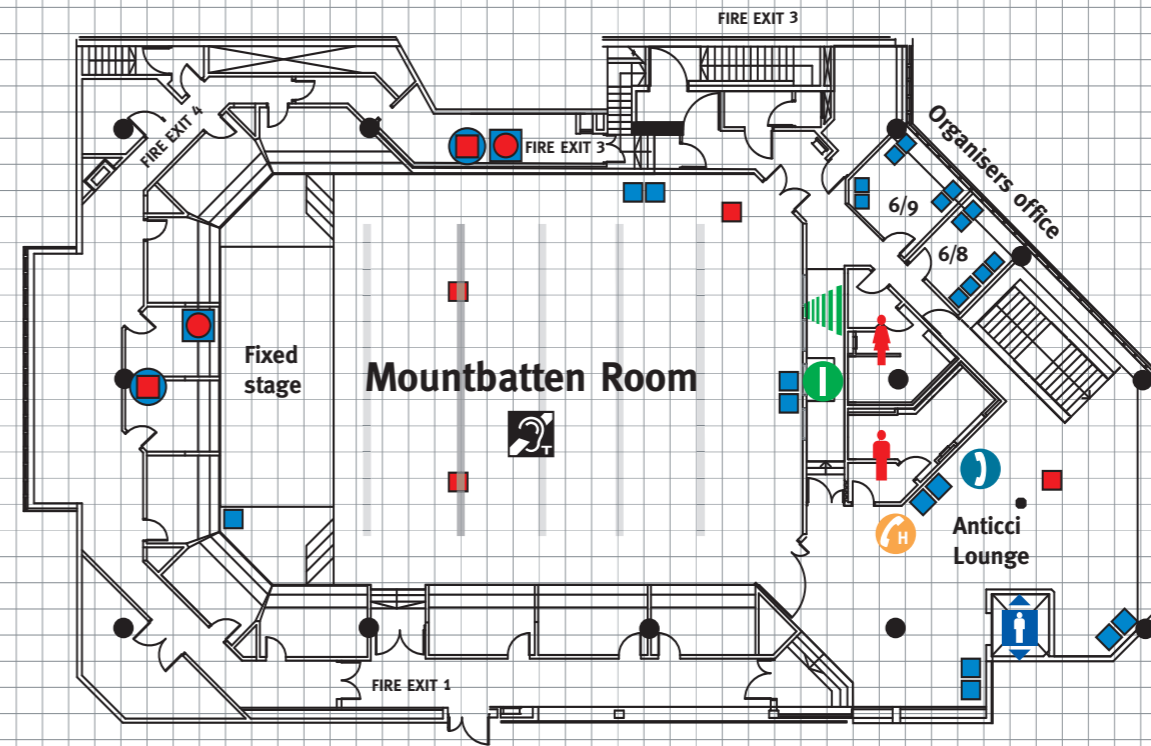
Mountbatten Room | Anticci Lounge



INVESTOR IN PEOPLE

sixth floor

	Mountbatten Room
Capacities	
Theatre	300
Classroom	—
Boardroom	—
Banquet	—
Fork buffet	—
Cabaret†	140
† Cabaret capacities are based on 7 people to a table. Please note that these figures are subject to change according to safety requirements, legislation and AV usage.	
Dimensions	
Height (max)	4.9 m
Height (min)	4.7 m
Length	19.0 m
Width	15.7 m
Area	293 m ²
Exhibitions	
	Not available
Floor loading	
	5.0 KN/M ²
Larger loading may be possible. Please check with your Event Manager.	
Lighting	
Flourescent	Yes
Wall lights	No
Down lights	Yes
Controls in room	Yes
Dimmers	Yes
Blackout	Yes
Windows	No
LX Bars 100kg/Mt UPL	Yes
General lighting	
Conference areas are provided with a mixture of 1000w Tungsten and LED Lighting as well as ceiling mounted flourescent fittings.	
Natural lighting	
	No
Power	
13 amp sockets	Yes, multiple locations in all areas
3 phase supply	Yes
Current capacity	Maximum per phase
Projection	
Slide	Yes
OHP	Yes
Video/data	Yes
Projection room	Yes
Simultaneous interpretation	
	No
Sound	
Permanently installed	Yes
Microphone points	Yes
Sound control room	Yes
Induction loop	Yes
Communications	
Telephone/fax	Available on request
ISDN lines	Available on request
Wifi	Available on request
CAT5	Available on request
Security and Fire Safety	
Please check access arrangements and special requirements with your Event Manager.	



Key

13 amp wall socket	Power 3 phase 63A	Sound control	Lift: Goods	Help phone	Fixed Lighting bars
Electrical floor sockets	Power 3 phase 32A	Fan housing	Interface control room	House phones	Pillar
Power 3 phase 125A	SI booth	Lift: Passenger	Induction loop	Toilets	Motorised Lighting Bar

