

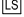


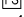
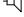
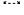
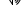
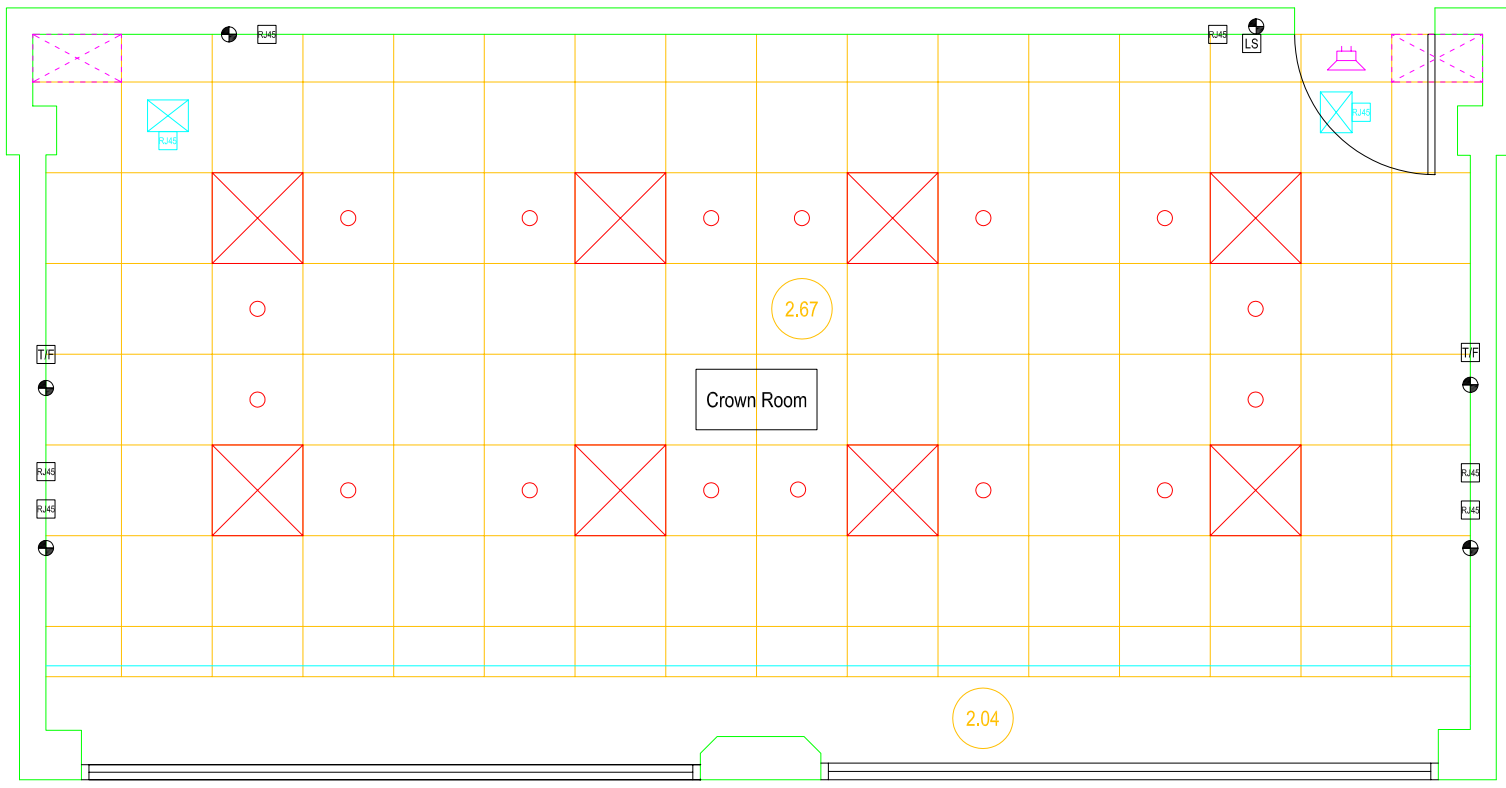


Notes:
 The Queen Elizabeth II Conference Centre states that this plan is for guidance only and does not form any contract, representation or warranty expressed or implied.

Key

-  BNC 5 Wire Data Patch
-  13 AMP Plug Point
-  Light Switch
-  Telephone/Data
-  TV/FM Point
-  Fused Spur
-  Speaker
-  Vent
-  Fire Alarm



Floor Loading
 3.5kn/m²

Rev.	Amendment	Date
Site Name: Queen Elizabeth II Conference Centre		
Drawing Title: Crown Room Fifth Floor		
Drawing Number: 5/001		
Scale: 1:50	Date: January 2006	