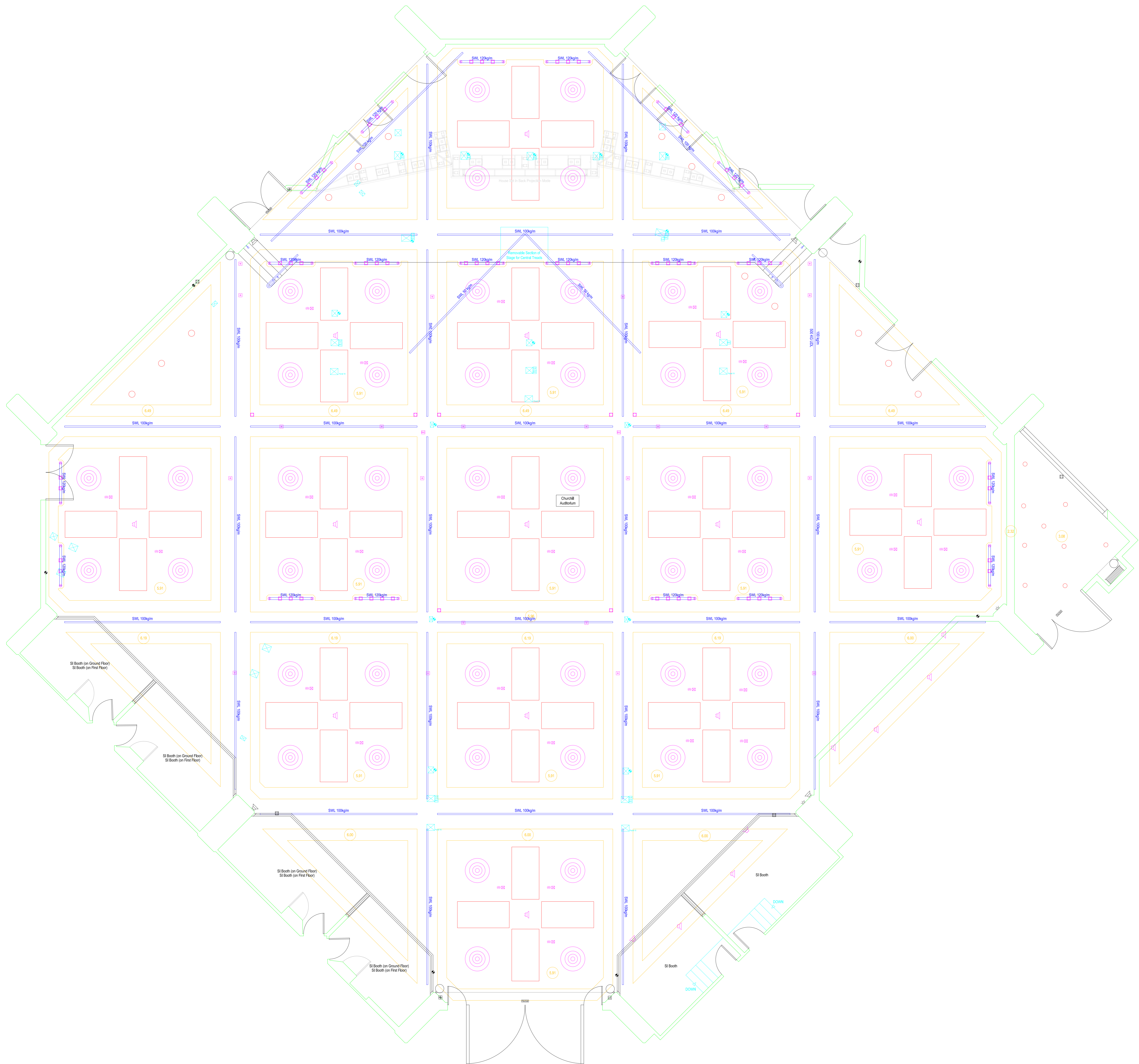


Notes:  
 The Queen Elizabeth II Conference Centre states that this plan is for guidance only and does not form any contract, representation or warranty expressed or implied.



Floor Loading  
 1.5kN/m<sup>2</sup>  
 Room Has an  
 Inductor Loop

- Key**
- Socapex Connection Point
  - 24 Channels of Lighting MAXIMUM
  - BNC 5 Wire Data Patch
  - XLR Audio Patch
  - Speakon
  - 13 AMP Plug Point
  - Simultaneous Transmitter
  - Light Switch
  - Telephone/Data
  - TV/FM Point
  - Sensor
  - Speaker
  - 500KG Eyelet
  - Fire Call Points
  - Illuminated Fire Exit Sign
  - Hose Reel & Riser Main
  - Fire Extinguisher

Rev.	Amendment	Date

Site Name:  
**Queen Elizabeth II  
 Conference Centre**

Drawing Title:  
**Churchill Auditorium  
 Ground Floor**

Drawing Number:  
**G/001**

Scale: 1:50      Date: January 2006